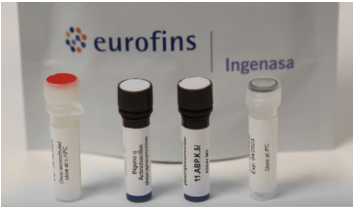




Ingenasa



Expanded qPCR catalog for animal health pathogens Trust and simplicity in qPCR testing

We offer the broadest portfolio (over 200) of qPCR assays for research use and veterinary diagnostics.

A vast range of tests for over 10 hosts, from livestock to companion animals and aquaculture.

- From detecting "active" infection to pathogen identification at the species or strain level, with the highest sensitivity.
- Developed from comprehensive bioinformatic analysis and experimental validation.
- Designed for simplicity and flexibility.



What we offer



qPCR assays for livestock

In industrial livestock production, effective diagnosis is key to guarantee biosafety and productivity. Our qPCR assays target viral and bacterial pathogens in a **wide range of animal species**:

- 75 assays for Cattle
- 72 assays for Small Ruminants
- 66 assays for Swine
- 37 assays for Poultry

Other farmed species:

- 24 assays for Rabbit
- 1 assays for Mink
- 7 assays for Aquaculture

The importance of bacterial identification

Fighting against antibiotic resistance, accurate identification of microbes is needed for a prudent use of antibiotics in animals.

Real-time PCR allows **sensitive and rapid pathogen detection**, facilitating targeted antibiotic treatment. Check our broadest range of qPCR assays for veterinary relevant bacterial diseases.



qPCR assays for companion animals

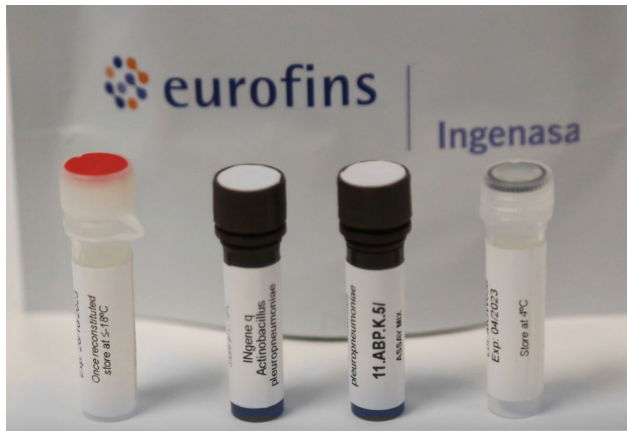
When fast answers are needed, reliable diagnostic tools lead to improved and targeted treatment decisions. Our qPCR assays cover **relevant virus, bacteria and parasites**:

- 46 assays for domestic pets including dogs and cats
- 30 assays for equids

Formats adapted to your testing needs, (50/100 rxn).



What are the advantages?



SIMPLICITY

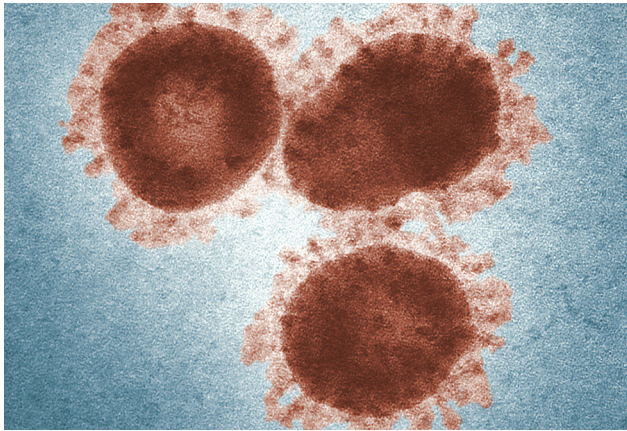
- Ready to use or simplified format
- Same sample volume
- Broad instrument compatibility
- Flexibility, most assays have unique thermal profile

TRUST

- Bioinformatic analysis and clinical testing
- Endogenous/amplification controls
- Continuous assay revision, through internal R&D and Proficiency Test Participation



Featured assays



Improved ASFV detection

African Swine Fever (ASFV) is one of the most severe diseases that threatens swine production. Detection of viral genome by real time polymerase chain reaction (qPCR) is the most sensitive technology for assessing infection, allowing reliable screening during outbreaks and monitoring situations.

The **INgene® q PPA (ASFV)** is a multiplex qPCR assay sensitive and specific for ASFV detection. A new improved version of this kit was developed and further validated at the European Union Reference Laboratory (EURL). The new **INgene® q PPA real time kit** has improved diagnostic performance, perfect agreement with the OIE method, better performance than the OIE method for pooled testing and robust thermal stability, supporting easier distribution to remote locations.

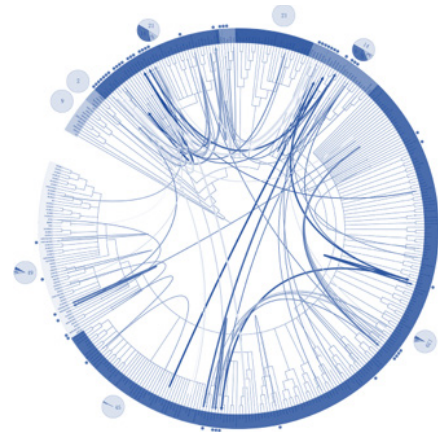
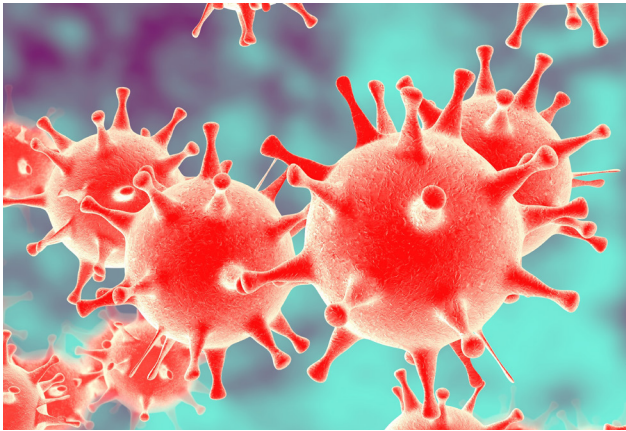
Registered in Spain and Germany

INgene q PPA (ASFV) is available in a 100 rxn format, ref. 11.PPA.K.5TX/Q

Assay features

- Sensitivity, LOD95% = 10 copies/rxn
- Detection in blood, serum, exudates and tissue samples
- Designed following OIE guidelines
- Validated by the EURL-ASF (CISA-INIA)
- Perfect agreement with the OIE reference method (UPL)
- Better sensitivity than the UPL assay in pooled samples

Featured assays



New PRRSV assays, adapted to a moving target

Porcine reproductive and respiratory syndrome (PRRS) is probably the most relevant viral disease affecting swine production. One hallmark of PRRSV is the extreme genetic diversity of its genomic RNA due to mutation and recombination. Molecular tools are key for PRRSV diagnostics, but qPCR assays need to be redesigned frequently to account for emerging variants.

Two new assays for PRRSV detection have been developed:

- INgene® PRRS NA-EU assay is a triplex qPCR assay that differentiates the NA and EU types. It is highly inclusive for typing
- INgene® PRRS Universal is a multiplex real time PCR assay that detects both PRRSV types. It is highly sensitive for surveillance

Assay features

- Based on hydrolysis probes
- Include workflow control
- Broadly inclusive including highly pathogenic variants
- Validated with reference strains and field samples, including serum, oral fluids and semen
- FAST cycling protocol

INgene q PRRS NA-EU is available in a 100 rxn format, ref. 11.PRD.K.5TX/Q

INgene q PRRS Universal is available in a 100 rxn format, ref. 11.PRU.K.5TX/Q

EUROFINS INGENASA S.A.

Phone | +34 913 680 501

Email | ingenasa@ingenasa.com

Website | www.ingenasa.eurofins-technologies.com

 **eurofins**

| **Ingenasa**