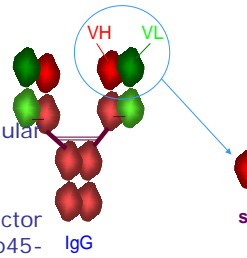
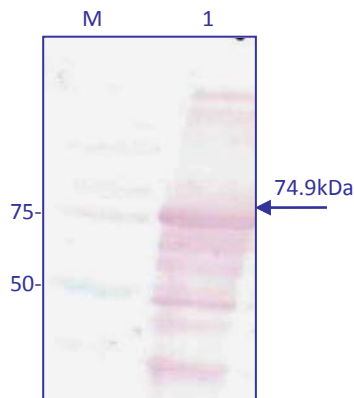


NFE2L3 specific Monoclonal Antibody



Antigen description: nuclear factor (erythroid-derived 2)-like 3. (NFE2L3, MW: 79.8KDa^a) Extracellular domain from 282 to 782 aminoacid (MW: 57.3 KDa^a).^a Native protein ; ^o Recombinant protein

Synonym: NRF3; NF-E2-related factor 3; NFE2-related factor 3; OTTHUMP00000122492; nuclear factor erythroid 2-related factor 3; nuclear factor, erythroid derived 2, like 3; nuclear factor-erythroid 2 p45-related factor 3; nuclear factor-erythroid 2-related factor 3; nuclear factor (erythroid-derived 2)-like 3



M: Molecular weight marker
1- NFE2L3

DESCRIPTION

The sFab fragment antibody has been obtained from a human sFab library by four panning against the antigen. The Fab fragment has been purified by A protein affinity column presenting a purity of 99%. It is specific of the NFE2L3 human recombinant protein.

APPLICATIONS

NFE2L3 detection by ELISA and western blot (WB) techniques.

RESULTS

Western blot analysis of MAb sFabE5 for detection of the recombinant protein NFE2L3 expressed in E.coli

CHARACTERISTICS

MAb	Isotype	Specificity
sFabE5	-	NFE2L3

FORMAT Two available formats:

FORMAT	QUANTITY	CONCENTRATION (aproximated)	REFERENCE
Supernatant	5 ml	10-20 µg / ml	M.30.NFE.B.sFabE5
Purified sFab	1 ml	1mg / ml	M.30.NFE.I.sFabE5

STORAGE -20 °C

SENSITIVITY

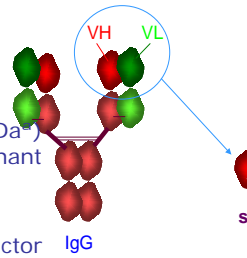
Sensitivity of the assay was determined using antibody serial dilution. We will provide the conditions of use

SPECIFICITY

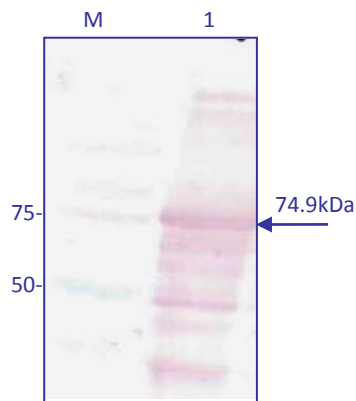
In order to determine the specificity of the assay the antibody were analyzed by western blot and ELISA against negative extracts.

Anticuerpo Monoclonal específico de NFE2L3

Descripción del antígeno; nuclear factor (erythroid-derived 2)-like 3. (NFE2L3, MW: 79.8KDa^a) Extracellular domain from 117 to 792 aminoacid (MW: 74.9 KDa^o).^a Native protein ; ^o Recombinant protein



Sinónimos: NRF3; NF-E2-related factor 3; NFE2-related factor 3; OTTHUMP00000122492; nuclear factor erythroid 2-related factor 3; nuclear factor, erythroid derived 2, like 3; nuclear factor-erythroid 2 p45-related factor 3; nuclear factor-erythroid 2-related factor 3; nuclear factor (erythroid-derived 2)-like 3



DESCRIPCIÓN

El fragmento sFab ha sido obtenido a partir de una librería humana de anticuerpos mediante cuatro rondas de "panning" frente al antígeno. Se ha purificado por afinidad mediante una columna de proteína A, presenta una pureza del 99%, Es específico de la proteína recombinante humana NFE2L3

APLICACIONES

Detección de NFE2L mediante las técnicas ELISA e Immunoblotting (IB).

RESULTADOS

Análisis por inmunoblotting con AcM sFabF4 para la detección de la proteína recombinante NFE2L3 expresada en E.coli

M: Marcador Peso Molecular
1- NFE2L3 Recombinante

CARACTERÍSTICAS

AcM	Isotipo	Especificidad
sFabE5	-	NFE2L3

PRESENTACIÓN Disponible en dos presentaciones

PRESENTACION	CANTIDAD	CONCENTRACIÓN	REFERENCIA
Sobrenadante	5 ml	10-20 µg / ml	M.30.NFE.B.sFabE5
sFab Purificada	1 ml	1mg / ml	M.30.NFE.I.sFabE5

CONSERVACIÓN -20°C

SENSIBILIDAD

La sensibilidad se determina haciendo diluciones seriadas del anticuerpo. Se proporcionarán condiciones de uso.

ESPECIFICIDAD

La especificidad se determinó en inmunoblotting y ELISA enfrentando los anticuerpos a extractos negativos.