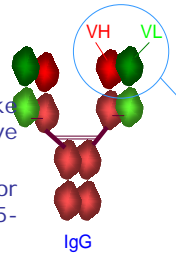
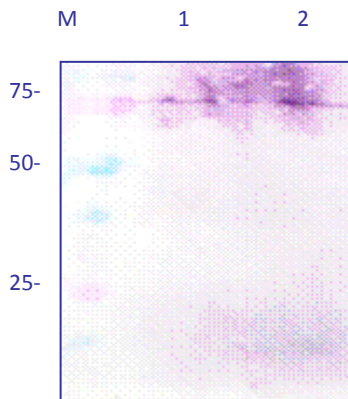


## NFE2L3 specific Polyclonal Antibody



**Antigen description:** nuclear factor (erythroid-derived 2)-like 3 nuclear factor (erythroid-derived 2)-like 3. (NFE2L3,PM: 79.8 KDa <sup>a</sup>). Extracellular domine from aminoácids 282 to 782 (PM:57.63 KDa <sup>o</sup>). <sup>a</sup> Native protein ; <sup>o</sup> Recombinant protein

**Synonym:** NRF3; NF-E2-related factor 3; NFE2-related factor 3; OTTHUMP00000122492; nuclear factor erythroid 2-related factor 3; nuclear factor, erythroid derived 2, like 3; nuclear factor-erythroid 2 p45-related factor 3; nuclear factor-erythroid 2-related factor 3; nuclear factor (erythroid-derived 2)-like 3



### DESCRIPTION

The polyclonal antibody has been obtained by immunization of rabbit with the purified protein. The IgGs has been purified by HPLC presenting a purity of 99%. It is specific of the NFE2L3 human recombinant protein.

### APPLICATIONS

NFE2L3 recombinant detection by ELISA and werntern blot (WB) techniques.

### RESULTS

Western blot analysis of polyclonal for detection of the protein NFE2L3 e in lymphocytes

M: Molecular weight marker

1: Cow lymphocytes

2: Human lymphocytes

### CHARACTERISTICS

Policlonal	Isotype	Specificity
Rabitt	-	NFE2L3

**FORMAT** Two available formats:

FORMAT	QUANTITY	CONCENTRATION	REFERENCE
Supernatant	5 ml	10-20 µg / ml	M.30.NFE.B.POLI
Purified IgG	1 ml	1mg / ml	M.30.NFE.I.POLI

**STORAGE** -20 °C

### SENSITIVITY

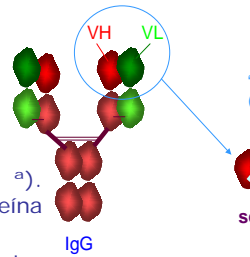
Sensitivity of the assay was determined using antibody serial dilution. We will provide the conditions of use

### SPECIFICITY

In order to determine the specificity of the assay the antibody were analyzed by western blot and ELISA against negative extracts.

## Anticuerpo Policlonal específico de NFE2L3

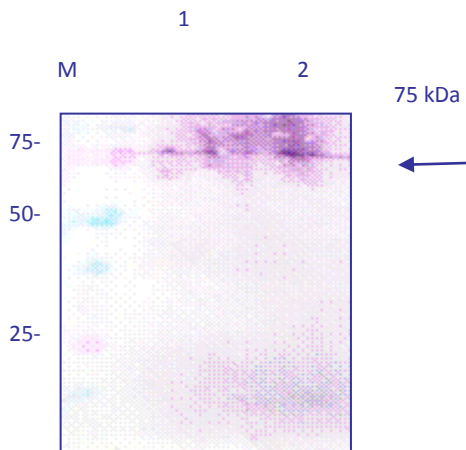
### M.30.NFE.I.POLI



**Descripción del antígeno;** nuclear factor (erythroid-derived 2)-like 3. (NFE2L3,PM: 79.8 KDa <sup>a</sup>). Dominio extracelular del aminoácido 282 al 782 (PM:57.63 KDa <sup>o</sup>). <sup>a</sup> Proteína nativa; <sup>o</sup> proteína recombinante.

**Sinónimos:** NRF3; NF-E2-related factor 3; NFE2-related factor 3; OTTHUMP00000122492; nuclear factor erythroid 2-related factor 3; nuclear factor, erythroid derived 2, like 3; nuclear factor-erythroid 2 p45-related factor 3; nuclear factor-erythroid 2-related factor 3; nuclear factor (erythroid-derived 2)-like 3

### DESCRIPCIÓN



El anticuerpo policlonal ha sido obtenido mediante inmunización de conejos con la proteína purificada. Las IgGs se purificaron por HPLC mediante una columna de intercambio iónico, presenta una pureza del 99%, es específico de la proteína recombinante humana NFE2L3

### APLICACIONES

Detección de NFE2L3 mediante las técnicas ELISA e Inmunoblotting (IB).

### RESULTADOS

Análisis por inmunoblotting con Policlonal para la detección de la proteína NFE2L3 en Linfocitos  
M: Marcador Peso Molecular

1: Linfocitos de vaca

2- Linfocitos humanos

### CARACTERÍSTICAS

Policlonal	Isotipo	Especificidad
conejo	-	NFE2L3

PRESENTACION: Disponible en dos presentaciones

FORMAT	QUANTITY	CONCENTRATION	REFERENCIA
Suero	5 ml	10-20 µg / ml	M.30.NFE.B.POLI
IgG purificada	1 ml	1mg / ml	M.30.NFE.I.POLI

CONSERVACIÓN: -20 °C

### SENSIBILIDAD

La sensibilidad se determina haciendo diluciones seriadas del anticuerpo. Se proporcionarán condiciones de uso.

### ESPECIFICIDAD

La especificidad se determinó en inmunoblotting y ELISA enfrentando los anticuerpos a extractos negativos.