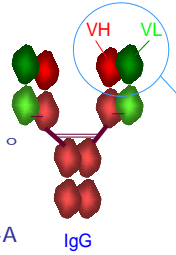
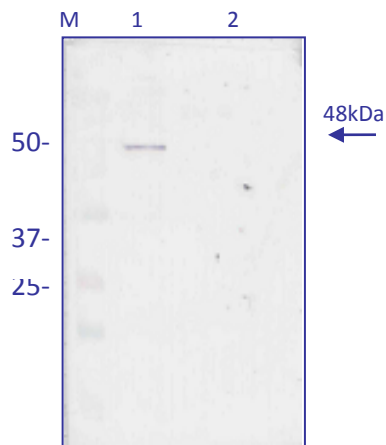


INHBA specific Monoclonal Antibody



Antigen description: inhibin, beta A. (INHBA, MW: 48.9 kDa^a) (MW: 48.9 kDa^o).^a Native protein ; ^o Recombinant protein

Synonym: EDF; FRP; FSH-releasing protein; Inhibin, beta-1; OTTHUMP00000159074; activin beta-A chain; erythroid differentiation factor; erythroid differentiation protein; follicle-stimulating hormone-releasing protein; inhibin beta A chain; inhibin, beta A (activin A, activin AB alpha polypeptide); inhibin, beta A



M: Molecular weight marker
1- INHBA
2- Negative control

DESCRIPTION

The sFab fragment antibody has been obtained from a human sFab library by four panning against the antigen. The Fab fragment has been purified by A protein affinity column presenting a purity of 99%. It is specific of the INHBA human recombinant protein.

APPLICATIONS

INHBA recombinant detection by ELISA and western blot (WB) techniques.

RESULTS

Western blot analysis of MAb sFabF4 for detection of the recombinant proteína INHBA expressed in E.coli

CHARACTERISTICS

MAb	Isotype	Specificity
sFabF4	-	INHBA

FORMAT Two available formats:

FORMAT	QUANTITY	CONCENTRATION	REFERENCE
Supernatant	5 ml	10-20 µg / ml	M.30.INH.B.sFabF4
Purified sFab	1 ml	1mg / ml	M.30.INH.I.sFabF4

STORAGE -20 °C

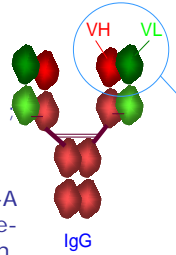
SENSITIVITY

Sensitivity of the assay was determined using antibody serial dilution. We will provide the conditions of use.

SPECIFICITY

In order to determine the specificity of the assay the antibody were analyzed by western blot and ELISA against negative extracts.

Anticuerpo Monoclonal específico de INHBA



Descripción del antígeno; inhibin, beta A. (INHBA, MW: 48.9 KDa^a) (MW: 48.9 KDa^o).^a Native protein
^o Recombinant protein

Sinónimos: EDF; FRP; FSH-releasing protein; Inhibin, beta-1; OTTHUMP00000159074; activin beta-A chain; erythroid differentiation factor; erythroid differentiation protein; follicle-stimulating hormone-releasing protein; inhibin beta A chain; inhibin, beta A (activin A, activin AB alpha polypeptide); inhibin, beta A

DESCRIPCIÓN

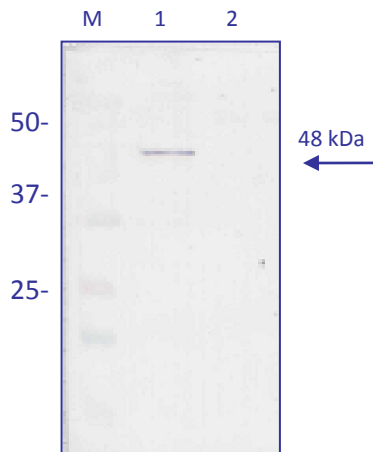
El fragmento sFab ha sido obtenido a partir de una librería humana de anticuerpos mediante cuatro rondas de selección frente al antígeno. Se ha purificado por afinidad mediante una columna de proteína A, presenta una pureza del 99%, Es específico de la proteína recombinante humana INHBA

APLICACIONES

Detección de INHBA mediante las técnicas ELISA e Inmunoblotting (IB).

RESULTADOS

Análisis por inmunoblotting con AcM sFabF4 para la detección de la proteína recombinante INHBA expresada en E.coli



M: Marcador Peso Molecular
 1- INHBA Recombinante
 2- Control Negativo

CARACTERÍSTICAS

AcM	Isotipo	Especificidad
sFabF4	-	INHBA

PRESENTACION Disponible en dos presentaciones

PRESENTACIÓN	CANTIDAD	CONCENTRACIÓN	REFERENCIA
Sobrenadante	5 ml	10-20 µg / ml	M.30.INH.B.sFabF4
sFab Purificada	1 ml	1mg / ml	M.30.INH.I.sFabF4

CONSERVACIÓN -20 °C

SENSIBILIDAD

La sensibilidad se determina haciendo diluciones seriadas del anticuerpo. Se proporcionarán condiciones de uso.

ESPECIFICIDAD

La especificidad se determinó en inmunoblotting y ELISA enfrentando los anticuerpos a extractos negativos.